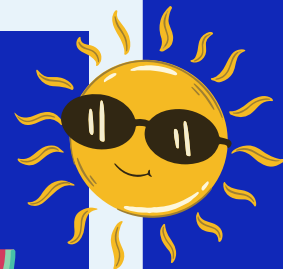


C.TECH COLLECTIONS

NEWSLETTER-**SUMMER** EDITION 2022



NEW YORK SHORTENED THE STATUTE OF LIMITATIONS- EFFECTIVE APRIL 3, 2020

The statute of limitations for Medical Debt was reduced from six (6) years to three (3) years for all medical services occurring on or after April 3, 2020.

Lawsuits must be filed before the 3-year limitation period is set to expire.

- The statute of limitations is NOT extended by payment arrangements.

If you have a payment arrangement from a patient that extends longer than three years, you should put the claim through to C. Tech Collections where the agency can work with a litigation attorney to secure a stipulation of settlement (court agreement).



C. Tech Collections
5505 Nesconset Highway. Suite 200
Mount Sinai, N.Y. 11766
Phone: 631-828-3150 Fax: 631-331-9566
info@ctech-collects.com www.ctech-collects.com



COMPLIANCE CHECKLIST FOR 2022 DON'T FORGET REG F!

NEW FEDERAL RULES WERE FINALIZED BY THE CONSUMER FINANCIAL PROTECTION BUREAU (CFPB) TITLED DEBT COLLECTION PRACTICES (REGULATION F). THESE NEW RULES HAVE BIG IMPLICATIONS FOR THE COLLECTION INDUSTRY. IN AN EFFORT TO STAY COMPLIANT WITH THESE RULINGS, C.TECH IS REACHING OUT TO ALL CLIENTS FOR THEIR COOPERATION AND SUPPORT.

THESE RULINGS WENT INTO EFFECT ON NOVEMBER 30, 2021

WHAT C.TECH REQUIRES:

IN ORDER TO COMPLY WITH THE RULE'S CONTENT REQUIREMENTS, PLEASE PROVIDE FOR EACH ACCOUNT THE FOLLOWING FINANCIAL DATA AT THE TIME OF PLACEMENT WITH C.TECH:

1. BALANCE AS OF THE LAST DATE OF SERVICE (NOTE: THIS MAY INCLUDE PAYMENTS/ADJUSTMENTS MADE PRIOR TO THE LAST DATE OF SERVICE). **NEW REQUIREMENT**
2. TOTAL PATIENT/INSURANCE PAYMENTS MADE AFTER THE LAST DATE OF SERVICE. **NEW REQUIREMENT**
3. BALANCE TO COLLECTIONS. (CURRENTLY RECEIVING) THE EXCHANGE OF THE ABOVE PERTINENT FINANCIAL DATA WILL NO DOUBT BOOST THE COLLECTABILITY OF PATIENT ACCOUNTS AND WILL ENSURE COMPLIANCY WITH THE NEW FEDERAL RULINGS.



PROMOTION ANNOUNCEMENTS

JO ANN MANZELLA VICE PRESIDENT, OPERATIONS

Jo Ann Manzella has been promoted to Vice President, Operations. Jo Ann has been with C.Tech for more than 20 years, during which time she has held positions as Assistant Bookkeeper, Full Charge Bookkeeper and Treasurer. Jo Ann's energy and enthusiasm, along with a keen understanding of improving processes through innovation and automation is key for the future expansion and growth for the company.

FELICIA BERKOFF DIRECTOR OF COLLECTIONS

Felicia Berkoff has been promoted to Director of Collections. Her 25 year tenure with C.Tech has advanced through increasingly more responsible positions in customer service, accounting and collections. Felicia has a wealth of experience in the "debt collection arena" and has been recognized for many outstanding achievements. We are thrilled about her new role in the company and look forward to new and exciting endeavors.

DEBBIE PALUN COLLECTION DIVISION MANAGER

Debbie Palun has been promoted to Collection Division Manager and will now be managing her own Collection Team. Debbie joined C.Tech in 1990 as a part time collector and was promoted to Assistant Collection Manager. Debbie has been an invaluable member of the collection team and during her tenure has gained the trust and admiration of the team members. Debbie is a strong leader for this position and will motivate and rally her team to higher levels.

CREDIT SCORE



CHANGES TO CREDIT REPORTING OF MEDICAL DEBT EFFECTIVE JULY 1, 2022

ANY MEDICAL DEBT THAT WAS PAID OFF WILL BE REMOVED FROM THE CONSUMER'S CREDIT REPORT

UNPAID MEDICAL DEBT CANNOT BE REPORTED TO THE CREDIT BUREAU FOR 365 DAYS (PREVIOUSLY 180 DAYS)

STARTING IN 2023, UNPAID MEDICAL DEBT THAT IS BELOW \$500 WILL NOT APPEAR ON THE CONSUMER'S CREDIT REPORT



REMINDER

This is a friendly reminder from C. Tech Collections for all of our valued clients to report any collection payments to C. Tech as soon as they are received. It is important that all payments and/or adjustments are reflected in our system to maintain compliance with FDCPA regulations.

Don't let the lazy dog days of summer get to your Receivables? Send C. Tech Collections your bad debt accounts and we will make them sizzle!

Find the Collections!

X J I C R L F X H I V E Y X H F U Y U W
L A O C H S C L I E N T S K S K R C U H
M F X B R E D I S P U T E T R T X V X F
E C T J P E W G T S R S M S L M R H D S
D O O E P L D Q S A W A J K E G E C E E
I B Z M P B A I N G Q B J R G J C P X Z
C A J G M K C C T X F D V B A R O I S S
A B W C A E V O E S L I Z G L N V S O G
L A R R P T R Y W M T F X H A W E X N R
R A K E G F W C M D E A B J B J R N U G
E O M M I T U J I G H N T Y P G Y V F T
G L A B O O F F J A J Y T U S H M X V F
F P N V O G L M Y M L S E S T M E S U T
A E A Q L I C E N S E D U B F E L B R H
J S G K A B E R T I N O Y Z C W D I E T
N J E O C O L L E C T I O N S T S L V Q
Z D M C T R V I H S E I U P D S D L E R
N E E K F L N H P V S D O D J N L S N U
P B N W K M D L W R G Z L D Q F J E U I
M T T L W E S Q I N S U R A N C E M E R

Collections
Commercial
Recovery
Dispute
Medical

Placements
Insurance
Statute
Revenue
Legal

Management
Licensed
Clients
Credit
Reg F

Bills
Debt



WATERMELON SALSA:

1 1/2 TEASPOONS LIME ZEST
(FROM ABOUT 1 LIME)
1/4 CUP FRESH LIME JUICE
(FROM ABOUT 3 LIMES)
1 TABLESPOON SUGAR
FRESHLY GROUND PEPPER
3 CUPS SEEDED AND FINELY
CHOPPED WATERMELON
1 CUCUMBER, PEELED, SEEDED
AND DICED
1 MANGO, PEELED AND DICED
1 JALAPENO PEPPER, SEEDED AND
MINCED
1 SMALL RED ONION, FINELY
CHOPPED
8 FRESH BASIL LEAVES, FINELY
CHOPPED
1/2 TEASPOON GARLIC SALT
TORTILLA OR PITA CHIPS, FOR
SERVING

STIR TOGETHER THE LIME ZEST, LIME JUICE, SUGAR AND 3/4 TEASPOON PEPPER IN A BOWL. ADD THE WATERMELON, CUCUMBER, MANGO, JALAPENO, ONION AND BASIL AND TOSS GENTLY. CHILL THE SALSA UNTIL READY TO SERVE. ADD THE GARLIC SALT JUST BEFORE SERVING. SERVE WITH CHIPS.